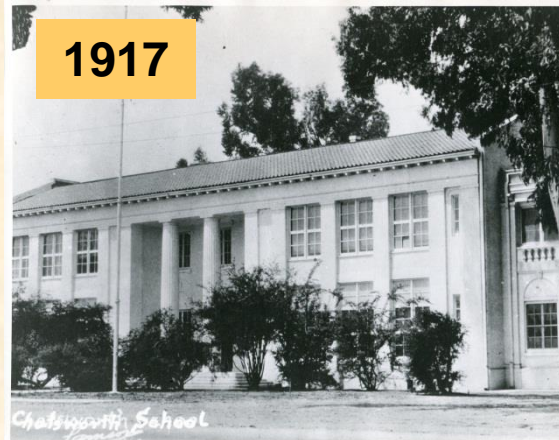


# Chatsworth Park Elementary School

1890



1917



1935 to Present



# The First One Hundred Years

- The Chatsworth Historical Society encouraged Ioline Cleveland to write the story of the Chatsworth Park School which for many years was the hub of the community.
- Ioline was a teacher at Chatsworth Elementary School from 1958 to 1984.
- She was president of the Chatsworth Historical Society from 1982 to 1986.
- Her book is available for purchase and tells the story of Chatsworth Park Elementary School.
- She wrote this book in 1988.



Ioline  
Cleveland

**CHATSWORTH PARK  
ELEMENTARY SCHOOL**

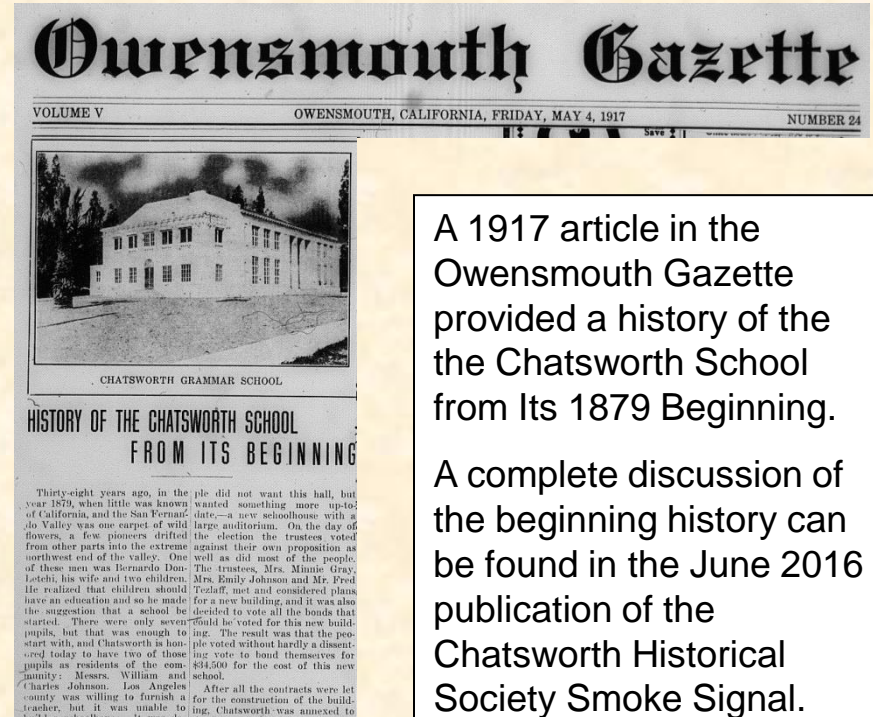


**The  
First  
One  
Hundred  
Years**

# Santa Susana School District 1879

- The Santa Susana School District, a part of the LA County School System, was formed in 1879 with the help of Bernardo Don-Letchi, Ann Johnson, Joseph Lowery and Milton Brown. In the first year school was held in the adobe house of Mrs. Augustia Jeremias.
- In 1880 a little one-room schoolhouse was built on Mrs. Jeremias property that held 20 seats on the west side of Topanga between Devonshire and Chatsworth St.

1955-02-15 The Chatsworth Grapevine



A 1917 article in the Owensmouth Gazette provided a history of the the Chatsworth School from Its 1879 Beginning.

A complete discussion of the beginning history can be found in the June 2016 publication of the Chatsworth Historical Society Smoke Signal.



# The 1st School Building, 1890-1916

- The first School Building was completed in 1890 at the present location of Chatsworth Park Elementary School.
- Regular attendance was a problem because some parents kept their children home to help with work. Mrs. Johnson would take her horse and buggy and drive around to pick up children and deliver them to school.



# Class Photos 1894 & 1895



Photo taken in 1894 includes Minnie Hill Palmer in front left of the small child in the bonnet.



This 1895 photo includes Emma Johnson center back row and her brothers Eastman and Norman Johnson in the front row.



# The 1st School Building, 1890-1916

- In 1900, an addition was built to the original school.
- Notice the hitching rail out front in the lower right corner.
- Chatsworth's population had grown significantly due to tunnel construction and quarry operations.



# The 1st School Building, 1890-1916

- In 1902, the school name was changed to Chatsworth Park School to avoid confusion with the new 1902 Santa Susana School built in Simi Valley.
- In 1905, the high school at San Fernando was completed, and students from Chatsworth who attended high school went to San Fernando High.





# 1907 Aaron Iverson Report Card

- Students were evaluated on Neatness and Deportment
- Grades were given for Spelling, Writing, Arithmetic, Grammar, English, History, Psychology, Drawing and Music.
- His overall average was 82.5 and he was ranked 2<sup>nd</sup> in his class of 5 students in the eighth grade.
- The teacher was Leona Browning.

*Chatsworth Park Public School*  
 REPORT OF *Aaron Iverson* Grade *Eighth*  
 1907-1908

STUDIES	1st Mo.	2nd Mo.	3rd Mo.	4th Mo.	5th Mo.	6th Mo.	7th Mo.	8th Mo.	9th Mo.	10th Mo.	Class Standing	County Exam'n	Average
Days Absent				6	5	0	2	0	3				
Times Tardy				1	0	1	1	0	1				
Neatness				97	98	96	98	95	97				
Deportment				94	92	93	93	94	97				
Reading													
Spelling				93	95	92	93	88	88		92	64	78
Writing				93	93	94	94	94	94		94	88	91
Arithmetic				91	90	92	96	90	95		91	95	93
Grammar				93	90	80	83	85	85		86	79	82
English				92	92	88	80	80	80		84	72	78
Geography													
History				85	85	84	83	85	80		84	66	75
Civil Gov't													
Physiology				88	90	60	75	80	86		79	85	82
Drawing				89	90	94	95	93	90		92	89	90
Music				85	80	87	89	85	89		85	71	78
Composition													
Geometry													
Algebra													
Phys. Geog.													
Latin													
AVERAGE													82.5
No. in Class													5
Rank													2

*Leona Browning* TEACHER.



# The 1st School Building, 1890-1916

- Photo from early 1900's  
Teachers were Miss Noyes and Mr. Maltby.
- RJ Williams is the small barefooted boy lower right hand corner with light hat.
- The Miranda girls are believed to be the two girls in the calico on either side of Miss Noyes.



# Class Photo 1909



1909 CHATSWORTH CALIFORNIA GRAMMAR SCHOOL - front of tree - Mrs. Malley  
Principal



# Class Photo 1914



# The 2nd School Building, 1917-1933

- In 1913, the Owens Valley aqueduct brought water to Los Angeles. Chatsworth voted to become a part of the city and share in the water supply in 1915.
- As soon as the school became a part of the LA City School system, plans were made for a new school building to be erected on the same location.





# The 2nd School Building, 1917-1933

- The 1890 building was sold and moved to the southwest corner of Devonshire and Topanga.
- The building was later moved to a place on Devonshire and torn down. Bill Schepler made sure the bricks came to the Acre and they are used around the driveway and flower beds.



# The 2nd School Building, 1917-1933

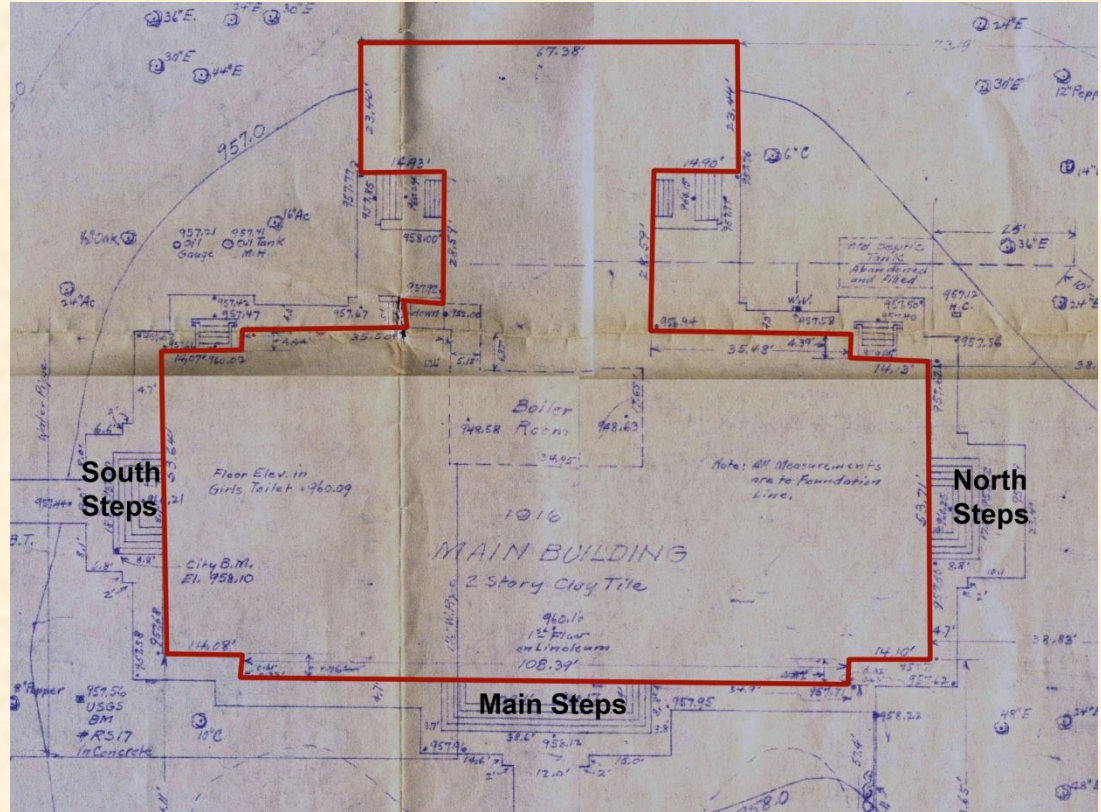
- The new school was a two story building that faced east.
- There was an auditorium in the middle of the first floor that was used for public meetings and box socials.
- There were classrooms on either side of the auditorium.
- There were more classrooms, a teachers lounge and living quarters upstairs.





# The 2nd School Building, 1917-1933

- The red lines identify the exterior walls of the two-story 1917 building.
- In the center is an underground boiler room.
- There are entrances with a sidewalk to the east and south.
- The description on the plot plan says “1916 Main Building 2 Story Clay Tile”



# The 2nd School Building, 1917-1933

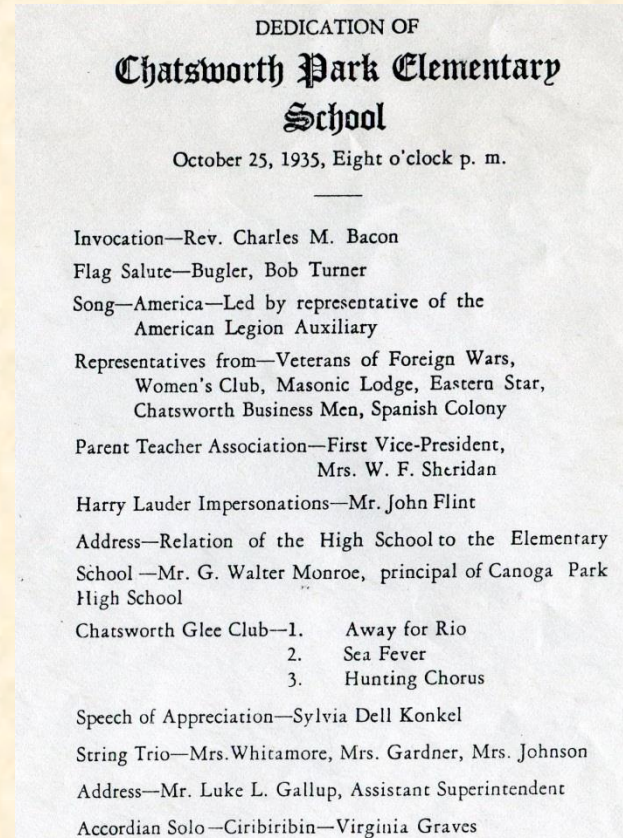
- On March 10, 1933 a 6.4 magnitude earthquake struck Long Beach. The two-story hollow tile constructed building was damaged but not severely.
- It was determined that it was not up to current earthquake standards and condemned.
- Tents with wooden floors and wooden sides about three feet up were used as temporary classrooms until a new building could be completed on the same site. A bungalow was also brought in.





# The 3rd School Building, 1935-present

- Engineer Henry C. Heynemann arrived to supervise the construction. Following the project, he married widow Bonnie Graves (Virginia Grave's mother) and lived on Tulsa west of Topanga.
- In his notes he mentions the construction of a new school at Chatsworth Park Elementary at a cost of \$35,000.
- At the Dedication ceremony, Bob Turner was the bugler for the Flag Salute, and Virginia Graves played an accordion solo.



# The 3rd School Building, 1935-present

- The new one-story building was ready for classes in September 1935.
- It had four classrooms on the east side of a main hallway. On the west side were two classrooms, offices, and two student bathrooms.

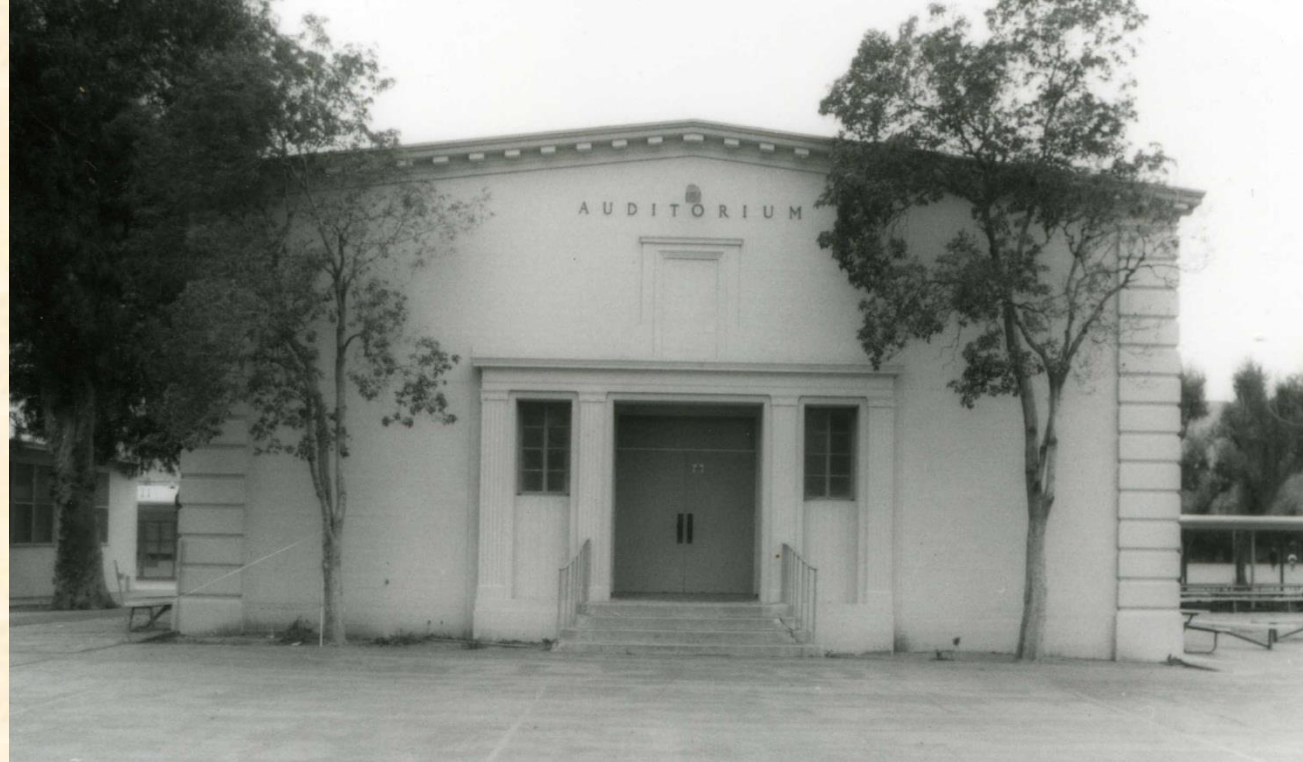


Jim Summers in 4<sup>th</sup> grade is standing center front, courtesy Summers family.



# The 3rd School Building, 1935-present

- An Auditorium was built in 1937.
- The dedication ceremony included the play “Elmer” by the graduating class, with George Hoppe as Elmer and Virginia Graves as Susan Collier.



# Class Photos 1939 & 1941



8<sup>th</sup> Grade Class standing at the entrance of the building



8<sup>th</sup> Grade class - Jim Summers in back row on left.



# The 3rd School Building, 1935-present

- Bungalows were added in 1956, and in the 1957-58 school year the building was remodeled with the offices added and the front (south entrance) changed to its present facade.



# The 3rd School Building, 1935-present

- In 1993, air conditioning was added to the school thanks to “Operation Kool a Kid”, a fundraising effort spearheaded by Michele de Gaetano.
- Michele’s request for LA school board funding had been turned down, even with photographic evidence of it being so hot that crayons would melt on the school floors.





# The 3rd School Building, 1935-present

- Today, Chatsworth Park Elementary School is recognized as a State of California Gold Ribbon school having made significant gains in academic content and performance standards.
- Their mascot is the Palomino.



# Graduation from Chatsworth Park

- Chatsworth Park had seventh and eighth grade students until about 1949. Then they went to Sutter Junior High or Columbus Jr High. Lawrence Junior High opened in 1968.
- San Fernando High School opened in 1905.
- In 1915, Canoga Park (then Owensmouth) High School was completed.
- Chatsworth High School opened in 1963.





# Memories and Remembrances

- The picture at the right is Frank Ditto and Nancy Todd in 1954, their first day of school. The sign stood at the southwest corner of the school.
- Mike Furbotten recalled that in the 50's and 60's Hot Dog Day was every Thursday. Your two choices were regular and plain.
- A publication from the PTA in 1968 reads: "Students may buy milk for 7 cents to drink with their sack lunch. Hot dogs are sold every Thursday."
- Ray Vincent remembers a favorite 60's recess game was "Socco", similar to dodge ball, played on the asphalt with a red rubber ball.
- In the 1960's the Roy Rogers narrated Disney movie short "Pecos Bill" was played in the school Auditorium.



# Memories and Remembrances

- Grace Munroe remembers playing with her crackerjack box toys under the tall eucalyptus trees when she was in kindergarten.
- Frank Ditto recalls playing the B-Flat Soprano Saxophone and taking instructions from the teacher at his home on the weekend.
- Kevin Watts commented that the teachers that made the most impression on him were Armstrong, Stuckenbruck and Bates. They used old school methods and were tough.
- Kathy Cruse said, "I remember Mrs. Bates, Mrs. Van Noy and so many other teachers that were instrumental in our education. In the 1950's there were not many twins - and these teachers made it a point of bringing out the best of my sister Mimi and I as individuals."





# Class Photos 1955-1984

- We have lots of Class Photos from 1955 to 1984. We have created a short 6 minute video to share these photos with you. And it has a catchy tune too!



Next up is a six minute video:

**Chicken Fat**  
**Chatsworth Park Elementary School**

[https://www.youtube.com/watch?v=4K3v341mX\\_E](https://www.youtube.com/watch?v=4K3v341mX_E)





**SITUPS (BOYS AND GIRLS)**  
(Abdominal Strength)



## CHICKEN FAT

*Illustrated by William  
The Fourth Avenue Series*



**ROBERT PRESTON**

*Conducted by Robert Preston*

**CF-1000**

*Frank Miller Corp.  
Riverside, California  
43C, 44P  
Total 4-10*



**TORTOISE AND HARE  
(RUNNING IN PLACE)**  
(cardiovascular)

# Sources and Acknowledgements

- “Chatsworth Park Elementary – The First One Hundred Years”, Ioline Cleveland, 1988
- Chatsworth Park Elementary School Photos donated by Chatsworth Historical Society archives, Ken Ditto, Ray Vincent, and others.
- 1917-05-04 Owensmouth Gazette and June 2016 Chatsworth Historical Society Smoke Signal
- The 1955-02-15 Chatsworth Grapevine discusses the location of the 1880 wooden schoolhouse
- Prepared by Ann and Ray Vincent, Chatsworth Historical Society, April 2012
  - Revised Sept 2016, Sept 2017, Nov 2022